

# TECHNICAL SERVICE BULLETIN

73-A-8

NO.



# Austin MG

June, 1973

SUBJECT:

FUEL TANK SLOW FILLING

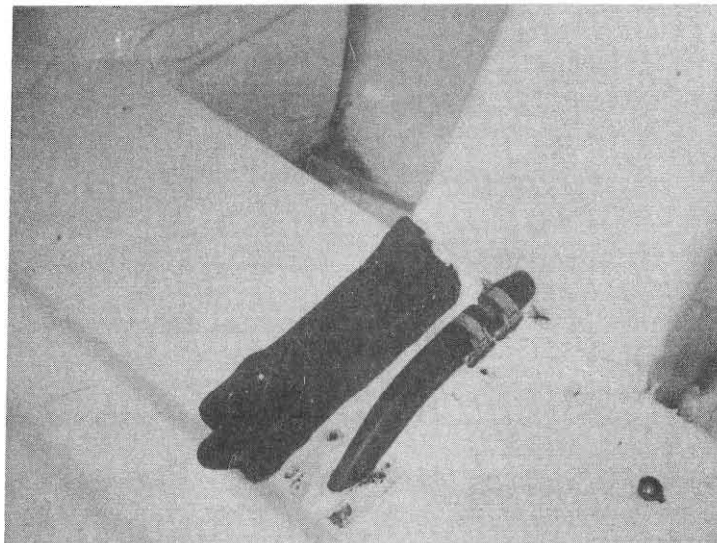
MODELS:

MARINA

If this condition is encountered, it may be caused by a partially trapped or kinked breather tube.

This can be rectified by removing the trunk mat and removing the four screws securing the protector plate (see photograph) which will expose the breather tube. Check that the tube is free of kinks and that it has not been trapped by the protector plate.

NOTE: It may be necessary to shorten the length of the venting tube to insure a bend-free routing of the tube.



J.P.