

TECHNICAL SERVICE BULLETIN

75-D-1

NO.



Austin MG

January, 1975

SUBJECT:

MAINSHAFT SPIGOT BEARING

MODELS:

AUSTIN MARINA - STANDARD TRANSMISSION

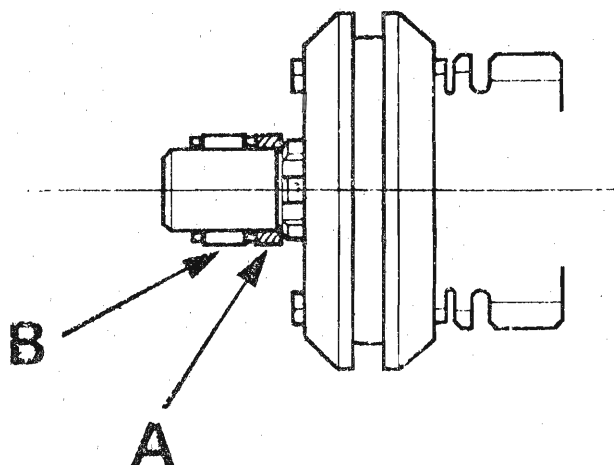
A larger mainshaft spigot bearing has been introduced at Gearbox No. 18V252088. To accommodate the larger bearing, a new 1st motion shaft and mainshaft are required, plus the addition of a mainshaft spacer.

Summary of Parts Changes:

<u>Old Part No.</u>	<u>Description</u>	<u>Qty.</u>	<u>New Part No.</u>
22G 1640	1st Motion shaft	1	DAM 737
22G 1742	Mainshaft	1	DAM 738
13H 6968	Spigot bearing	1	13H 9513
-	Mainshaft spacer	1	DAM 739

The above parts are only interchangeable as complete sets.

NOTE:- On assembling the modified components it is essential that the mainshaft spacer 'A' is fitted towards the 3rd/4th synchromesh assembly prior to bearing 'B' being fitted to the mainshaft spigot.



PB/36D